

JET®

WMH TOOL GROUP

Operating Instructions and Parts Manual JHS Series Hydraulic Stackers

Models JHS-1100 and JHS-2200



Model JHS-2200 shown

WMH TOOL GROUP

2420 Vantage Drive
Elgin, Illinois 60124
Ph.: 800-274-6848
www.wmhtoolgroup.com

Part No. M-140520
Revision B 1/07
Copyright © WMH Tool Group

WARRANTY AND SERVICE

WMH Tool Group, Inc., warrants every product it sells. If one of our tools needs service or repair, one of our Authorized Service Centers located throughout the United States can give you quick service. In most cases, any of these WMH Tool Group Authorized Service Centers can authorize warranty repair, assist you in obtaining parts, or perform routine maintenance and major repair on your JET® tools. For the name of an Authorized Service Center in your area call 1-800-274-6848.

MORE INFORMATION

WMH Tool Group is consistently adding new products to the line. For complete, up-to-date product information, check with your local WMH Tool Group distributor, or visit jettools.com.

WARRANTY

JET products carry a limited warranty which varies in duration based upon the product (MW = Metalworking, WW = Woodworking).

90 DAY WARRANTY	1 YEAR WARRANTY	2 YEAR WARRANTY	5 YEAR WARRANTY	LIFE LIFETIME WARRANTY
Lathe Accessories Machine Accessories Mobile Bases Safety Equipment Specialty Items Vise Accessories	Air Tools- Contractor Air Tools-Industrial Air Tools-Light Industrial Lubrication	Body Repair Kits Bottle Jacks Cable Pullers Cold Saws Hoists-Air Hoists-Electric Metalforming Mill/Drills Milling Machines	MW Bandsaws MW Drill Presses MW Finishing Equipment MW Lathes MW Precision Vises Pallet Trucks Rigging Equip. Service Jacks	Stackers Surface Grinders Tapping Trolleys-Air Trolleys-Electric Web Slings Winches-Electric
Beam Clamps Chain Hoist- Manual Lever Hoists Pullers-JCH Models Scissor Lift Tables Screw Jacks Trolleys-Geared	Trolleys-Plain Winches-Manual WW Air Filtration WW Bandsaws WW Buffers WW Drill Presses WW Dust Collectors WW Dust Filters	WW Dust Fittings WW Jointers WW Lathes WW Planers WW Sanders WW Shapers WW Tablesaws	Fastening Tools Mechanics Hand Tools Striking Tools Vises (non-precision) Clamps	

WHAT IS COVERED?

This warranty covers any defects in workmanship or materials subject to the exceptions stated below. Cutting tools, abrasives and other consumables are excluded from warranty coverage.

WHO IS COVERED?

This warranty covers only the initial purchaser of the product.

WHAT IS THE PERIOD OF COVERAGE?

The general JET warranty lasts for the time period specified in the product literature of each product.

WHAT IS NOT COVERED?

Five Year Warranties do not cover woodworking (WW) products used for commercial, industrial or educational purposes. Woodworking products with Five Year Warranties that are used for commercial, industrial or education purposes revert to a One Year Warranty. This warranty does not cover defects due directly or indirectly to misuse, abuse, negligence or accidents, normal wear-and-tear, improper repair or alterations, or lack of maintenance.

HOW TO GET SERVICE

The product or part must be returned for examination, postage prepaid, to a location designated by us. For the name of the location nearest you, please call 1-800-274-6848.

You must provide proof of initial purchase date and an explanation of the complaint must accompany the merchandise. If our inspection discloses a defect, we will repair or replace the product, or refund the purchase price, at our option. We will return the repaired product or replacement at our expense unless it is determined by us that there is no defect, or that the defect resulted from causes not within the scope of our warranty in which case we will, at your direction, dispose of or return the product. In the event you choose to have the product returned, you will be responsible for the shipping and handling costs of the return.

HOW STATE LAW APPLIES

This warranty gives you specific legal rights; you may also have other rights which vary from state to state.

LIMITATIONS ON THIS WARRANTY

WMH TOOL GROUP LIMITS ALL IMPLIED WARRANTIES TO THE PERIOD OF THE LIMITED WARRANTY FOR EACH PRODUCT. EXCEPT AS STATED HEREIN, ANY IMPLIED WARRANTIES OR MERCHANTABILITY AND FITNESS ARE EXCLUDED. SOME STATES DO NOT ALLOW LIMITATIONS ON HOW LONG THE IMPLIED WARRANTY LASTS, SO THE ABOVE LIMITATION MAY NOT APPLY TO YOU.

WMH TOOL GROUP SHALL IN NO EVENT BE LIABLE FOR DEATH, INJURIES TO PERSONS OR PROPERTY, OR FOR INCIDENTAL, CONTINGENT, SPECIAL, OR CONSEQUENTIAL DAMAGES ARISING FROM THE USE OF OUR PRODUCTS. SOME STATES DO NOT ALLOW THE EXCLUSION OR LIMITATION OF INCIDENTAL OR CONSEQUENTIAL DAMAGES, SO THE ABOVE LIMITATION OR EXCLUSION MAY NOT APPLY TO YOU.

WMH Tool Group sells through distributors only. The specifications in WMH catalogs are given as general information and are not binding. Members of WMH Tool Group reserve the right to effect at any time, without prior notice, those alterations to parts, fittings, and accessory equipment which they may deem necessary for any reason whatsoever. JET® branded products are not sold in Canada by WMH Tool Group.

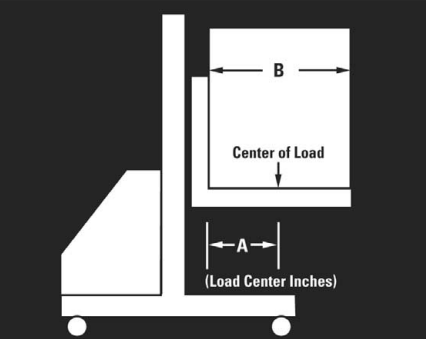
Warnings

- Read and understand all warnings and operating instructions before attempting to use the winch stacker.
- Do not exceed rated load or load center capacity. Excessive load can cause tipping or loss of control.
- Do not exceed load center capacity of stacker. Load center is measured horizontally from back of forks or platform. Overall length of load must never be more than twice the load center capacity.
- Do not allow anyone to sit or ride on fork, or enter area beneath forks.
- Center of evenly distributed load should never exceed load center to ensure safe and balanced lifting.
- Always keep fingers, hands and feet clear of forks and mast when lifting or lowering load.
- Always center, stabilize, and secure load before raising forks or moving the stacker.
- Do not allow more than half of load to extend beyond load center of stacker.
- Always keep load close to mast.
- Do not transport load in the raised position.
- Use on level, smooth, finished floors only.
- Do not use on uneven or sloping floors.
- Always allow load to descend in a controlled, cautious manner.
- Always use genuine factory replacement parts only.
- Failure to comply with all of these warnings may result in tipping, loss of control and load, damage to hydraulic stacker, personal injury and/or property damage.

⚠ WARNING

1. Do not exceed rated load center capacity of 770 lbs.
2. Load center is measured horizontally from back of forks or back of platform (A).
3. Center of evenly distributed load should never exceed load center to ensure safe and balanced lifting (B).
4. Overall length of load should never be more than twice the load center.
5. Failure to comply with these warnings may result in tipping, loss of control and load, damage to stacker, personal injury and/or property damage.

⚠ CAUTION THIS UNIT HAS AN 18" LOAD CENTER



DO NOT REMOVE OR OBSCURE THIS LABEL

Table of Contents

Table of Contents	4
Specifications	4
Introduction	4
Stacker Safety Precautions.....	5
Assembly & Adjustment.....	5
Operation	5
Troubleshooting.....	6
Replacement Parts	6
HS-1100 Mast Assembly.....	7
Parts List: JHS-1100 Mast Assembly.....	8
JHS-2200 Mast Assembly	10
Parts List: JHS-2200 Mast Assembly.....	11
JHS-1100 and JHS-2200 Pump Assembly	13
Parts List: JHS-1100 and JHS-2200 Pump Assembly.....	14

Specifications

	JHS-1100	JHS-2200
Model Number.....	140520	140521
Stock Number.....	1,100	2,200
Load Capacity (lbs).....	48 x 40	48 x 40
Pallet Capacity (L x W in).....	20	20
Load Center (in)	59	59
Maximum Lifting Height (in)	2-3/4	2-3/4
Minimum Fork Height (in).....	360 / 50	360 / 50
Turning Radius (degrees/in).....	31	62
Handle Force Req'd at Capacity (lbs).....		
Handle Strokes to Reach Maximum		
Height (no load/max. load).....	45 / 75	45 / 75
Fork Dimensions (L x W x H in).....	41-3/4 x 4-3/8 x 2-3/8	41-3/4 x 5-1/4 x 2-1/4
Overall Fork Width Min/Max (in).....	11 / 27-1/2	11 / 27-1/2
Outrigger Size (W x H in).....	2-3/8 x 2-3/8	4 x 3-1/2
Outrigger Inside Width Min/Max (in).....	34-1/4 / 50-1/2	34-1/4 / 50-1/2
Outrigger Outside Width Min/Max (in)	38-7/8 / 55-5/8	42 / 58-3/4
Load Wheel Size (OD x W in).....	5 x 3-1/4 Nylon	5 x 3-1/4 Nylon
Caster Size (OD x W in).....	7 x 2 Poly/Aluminum	7 x 2 Poly/Aluminum
Overall Dimensions (L x W x H in)	62 x 38-7/8 x 78	62 x 42 x 78
Net Weight (lbs).....	396	548
Shipping Weight (lbs).....	416	568

The above specifications were current at the time this manual was published, but because of our policy of continuous improvement, WMH Tool Group reserves the right to change specifications at any time and without prior notice, without incurring obligations.

Introduction

Congratulations on your purchase of a JET Hydraulic Stacker.

Your hydraulic stacker is designed to prevent lifting injuries by providing a stable, mobile lifting device for moderate to heavy loads. It is ideal for use in confined areas or narrow aisles.

Your hydraulic stacker is simple and easy to operate with your choice of a hydraulic operated foot pedal or pallet truck style handle for additional leverage. Durable smooth rolling nylon load wheels and large diameter swivel casters make the hydraulic stacker easy to maneuver. Caster brakes are standard to prevent movement. It features a hydraulic pump with automatic overload protection, heavy-duty welded steel frame, durable powder coat finish, and with regular maintenance will provide years of dependable service.

An optional steel platform is available to convert your hydraulic stacker to a mobile work station.

Stacker Safety Precautions

1. Read and understand manual completely before operation.
2. Do not exceed rated load center or weight capacity. Load center is measured horizontally from the back of forks.
3. To ensure safe and balanced lifting, center of balanced load should not be positioned past the load center.
4. Never allow anyone to sit or ride on fork, or to remain beneath fork.
5. Always center, balance and secure load before raising or moving stacker.
6. Do not transport loads in the raised position.
7. Use only on smooth finished floors; do not use on sloping floors.
8. Always keep hands and feet clear of fork when lifting or lowering load.
9. Pull pump release lever slowly to allow load to descend in a controlled manner.
10. Failure to comply with the above warnings may result in tipping, loss of control, personal injury and/or property damage.

Assembly & Adjustment

1. Remove all packing material from the stacker.
2. To assemble forks, unscrew socket head flat screw (#4 page 7, for JHS-1100; #5 page 10 for JHS-2200). Tap fork shaft out (#5 for JHS-1100; #6 for JHS-2200). Forks to be assembled must come from the same crate as the mast.
3. Align holes in forks (#1) with holes in carriage (#3 for JHS-1100; #4 for JHS-2200) and tap fork shaft through carriage and fork holes.
4. Be sure assembled forks are even and parallel. Reinstall socket head flat screw in carriage to hold fork shaft in place.
5. To assemble outrigger legs, check to be sure legs to be assembled come from the same crate as the mast.
6. Insert outrigger legs (#29 & #31 for JHS-1100; #24A and #24B for JHS-2200) into tube openings in bottom of mast (#25 for

JHS-1100; #18 for JHS-2200). Align holes in legs with holes in mast to enable legs to be equal distance from mast. Legs should slide into tube openings easily without force.

7. Fasten legs with four hex cap screws, four lock washers and four flat washers (#26 thru 28 for JHS-1100; #25 thru 27 for JHS-2200). Tighten hex nuts firmly.

WARNING Do not exceed rated load and load center capacities. Excessive load can cause tipping or loss of control. Use on finished, smooth and level floors only; do not use on slopes.

Operation

1. Insert both forks evenly and completely under the load. Load must be distributed equally on both forks and centered toward the mast. Do not allow more than half the load to extend beyond load center. Do not lift load with fork tips only and do not lift unstable or loose load.
2. Press the foot pedal or push the pump handle downwards to raise the forks by one stroke. Continue to pump the pedal, or handle, until desired height is reached. Do not exceed maximum lifting height.
3. To lower the forks, pull the pump release lever on the handle slowly to allow the load to lower in a cautious and controlled manner.
4. To move stacker with load, lower forks carefully. Use both hands with a firm grip to push and steer the stacker on level, smooth finished floors only. Keep all people clear from stacker while lifting, lowering and moving load.

CAUTION: When not in use, do not allow heavy loads to remain on the forks for an extended period of time. Always lower forks when not in use.

For optimum performance, the drive chain (#35 on model JHS-1100, #37 on model JHS-2200) should be lubricated with chain oil regularly.

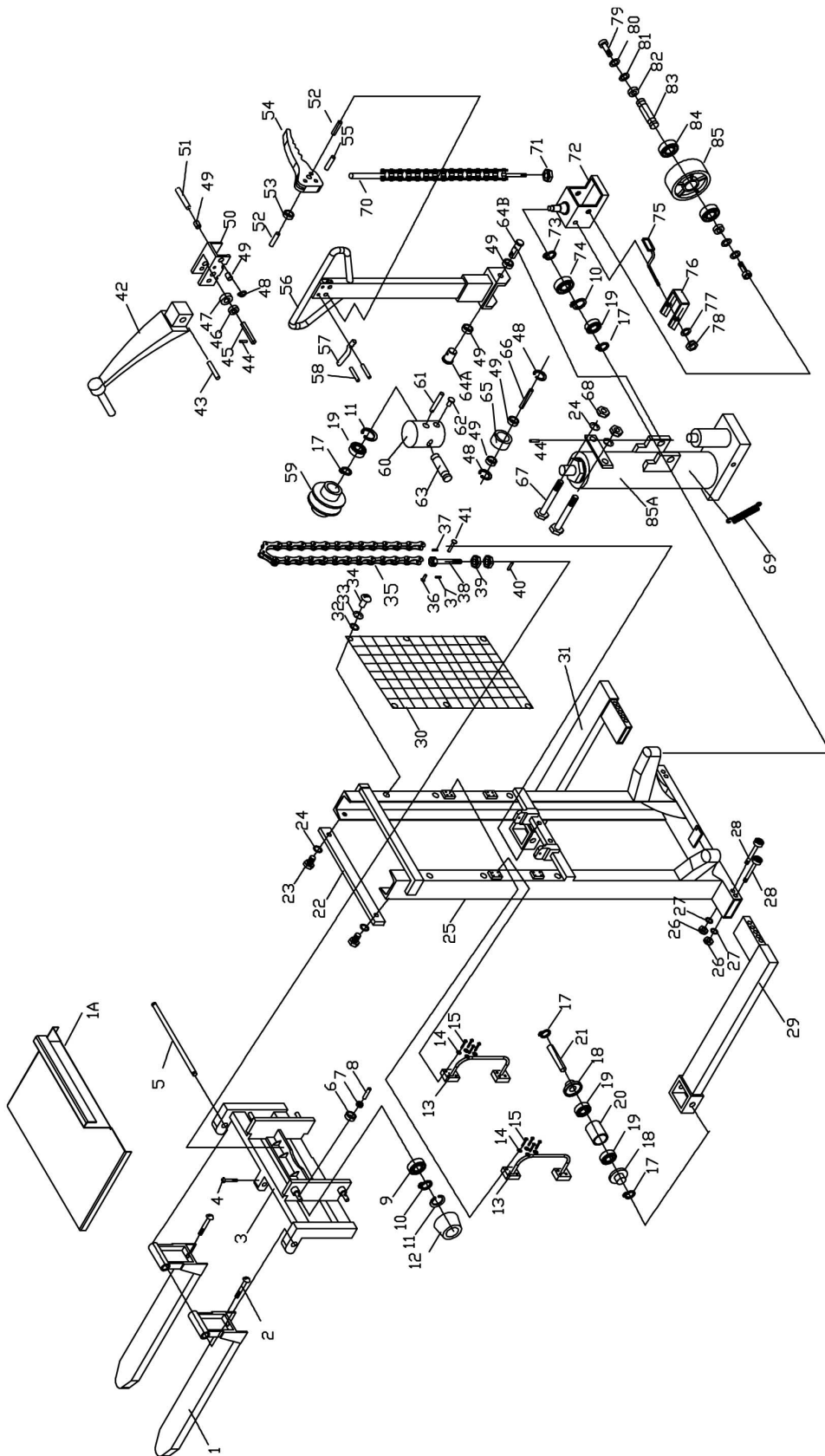
Troubleshooting

Trouble	Probable Cause	Remedy
Fork will not lift to maximum height.	Hydraulic oil level is low.	Fill with hydraulic oil.
Forks will not rise.	Oil level is low, or oil is too viscous.	Fill with oil, or change oil.
	Oil has impurities.	Change oil.
	Hex nut (#71 on JHS-1100, #62 on JHS-2200) is too high, keeping the pumping valve open.	Adjust hex nut properly.
	Air in hydraulic pump.	Release air from the system by pulling pump release handle, then pumping handle up and down several times.
Forks can not be lowered.	The lifting piston is deformed, resulting from overloading.	Replace the piston.
	The fork was kept in high position for extended time resulting in rusting and jamming of the exposed piston rod.	Keep fork in lowest position when not in use. Keep piston well lubricated.
	Adjustment nut (#71 on JHS-1100, #62 on JHS-2200) not in correct position.	Adjust nut properly.
	Fork frame and roller sprocket are jammed.	Correct jam; replace bearing if necessary.
Hydraulic fluid leak.	Sealing parts worn or damaged.	Replace parts.
	Some parts cracked or worn.	Replace parts.
The forks descend without the release valve working.	Release valve unable to close properly due to impurities in hydraulic oil.	Replace with new oil.
	Hydraulic system cracked or bored.	Inspect and replace the waste parts.
	Air in the oil.	Release air from oil by pulling pump release handle, then pumping handle up and down several times.
	Seal parts worn or damaged in hydraulic pump.	Replace worn or damaged parts.
	Adjustment nut (#71 on JHS-1100, #62 on JHS-2200) is not in correct position.	Adjust nut properly.

Replacement Parts

Replacement parts are listed on the following pages. To order parts or reach our service department, call 1-800-274-6848 between 7:30 a.m. and 6:00 p.m. (CST), Monday through Friday. Having the Model Number and Serial Number of your machine available when you call will allow us to serve you quickly and accurately.

JHS-1100 Mast Assembly

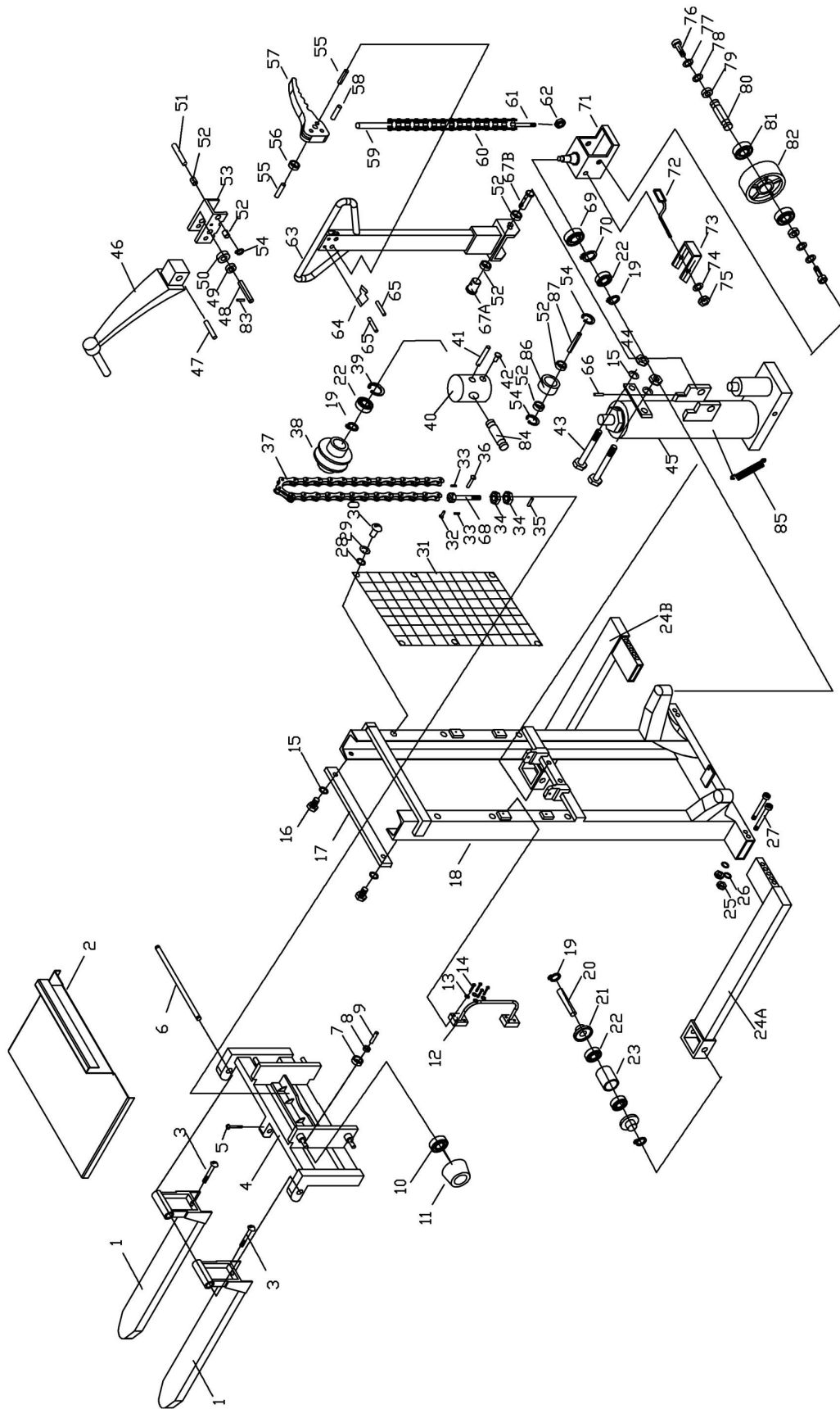


Parts List: JHS-1100 Mast Assembly

Index No.	Part No.	Description	Size	Qty
1	JHS1100-1	Fork		2
1A	140522	Optional Steel Platform	28-1/4" x 41-1/2"	1
2	JHS1100-2	Adjusting Screw		2
3	JHS1100-3	Mounting Plate		1
4	JHS1100-4	Dog Point Socket Set Screw	M6 x 25	1
5	JHS1100-5	Fork Shaft		1
6	JHS1100-6	Guide Roller		4
7	JHS1100-7	Bushing	10 x 8 x 8	4
8	JHS1100-8	Guide Roller Axle		4
9	BB-6005ZZ	Ball Bearing	6005ZZ	4
10	JHS1100-10	Snap Ring	Ø 25	6
11	JHS1100-11	Snap Ring	Ø 47	6
12	JHS1100-12	Rolling Axle Cover		4
13	JHS1100-13A	Rubber Grip Handle		2
14	TS-1551041	Lock Washer	M6	16
15	TS-1503021	Socket Head Cap Screw	M6 x 10	16
17	JHS1100-17	Snap Ring	Ø 20	8
18	JHS1100-18	Dust Cap		4
19	BB-6204ZZ	Ball Bearing	6204ZZ	8
20	JHS1100-20	Front Wheel		2
21	JHS1100-21	Front Wheel Axle		2
22	JHS1100-22	Bar		1
23	TS-1504031	Socket Head Cap Screw	M8 x 16	2
24	TS-1551061	Lock Washer	M8	4
25	JHS1100-25	Mast		1
26	TS-1540081	Hex Nut	M12	4
27	TS-1551081	Lock Washer	M12	4
28	TS-1492101	Hex Cap Screw	M12 x 100	4
29	JHS1100-29	Left Outrigger Leg		1
30	JHS1100-30	Steel Fence		1
31	JHS1100-31	Right Outrigger Leg		1
32	TS-1550031	Flat Washer	M5	6
33	TS-1551031	Lock Washer	M5	6
34	TS-1533032	Phillips Pan Head Machine Screw	M5 x 10	6
35	JHS1100-35	Chain	12A-1 x 58	2
36	JHS1100-36	Link Pin		2
37	JHS1100-37	Split Pin	Ø 2 x 16	4
38	JHS1100-38	Link Pin		2
39	TS-2310181	Hex Nut	M18	4
40	JHS1100-40	Split Pin	Ø 4 x 30	2
41	JHS1100-41	Link Pin		2
42	JHS1100-42	Foot Pedal		1
43	JHS1100-43	Spring Pin	Ø 8 x 30	2
44	JHS1100-44	Spring Pin	Ø 3 x 30	2
45	JHS1100-45	Roller Pin		1
46	JHS1100-46	Bushing	17 x 15 x 15	1
47	JHS1100-47	Roller		1
48	JHS1100-48	Snap Ring	Ø 12	3
49	JHS1100-49	Bushing	18 x 16 x 8	6
50	JHS1100-50	Foot Lever		1
51	JHS1100-51	Roller Axle		1
52	JHS1100-52	Spring Pin	Ø 4 x 22	2
53	JHS1100-53	Roller		1
54	JHS1100-54	Lever		1
55	JHS1100-55	Spring Pin	Ø 6 x 32	1
56	JHS1100-56	Handle		1

57	JHS1100-57	Blocking Spring		1
58	JHS1100-58	Spring Pin	∅ 4 x 30	2
59	JHS1100-59	Chain Wheel		2
60	JHS1100-60	Chain Wheel Bracket		1
61	JHS1100-61	Spring Pin	∅ 8 x 50	1
62	TS-1503051	Socket Head Cap Screw	M6 x 20	1
63	JHS1100-63	Shaft		1
64A	JHS1100-64A	Large Handle Pin		1
64B	JHS1100-64B	Small Handle Pin		1
65	JHS1100-65	Roller		1
66	JHS1100-66	Shaft		1
67	TS-1490061	Hex Cap Screw	M8 x 35	2
68	TS-1540061	Hex Nut	M8	2
69	JHS1100-69	Spring		1
70	JHS1100-70	Release Rod		1
70A	JHS1100-70A	Chain	05B-1 x 15	1
71	JHS1100-71	V-Nut	M6	1
72	JHS1100-72	Wheel Cover		2
73	JHS1100-73	Snap Ring	∅ 52	2
74	BB-7205AC	Ball Bearing	7205AC	2
75	JHS1100-75	Foot Brake		2
76	JHS1100-76	Stop Lug		2
77	TS-1550061	Flat Washer	M8	2
78	JHS1100-78	V-Nut	M8	2
79	JHS1100-79	Hex Head Bolt	M10 x 25	4
80	TS-1551071	Lock Washer	M10	4
81	TS-1550071	Flat Washer	M10	4
82	JHS1100-82	Dust Cap		4
83	JHS1100-83	Wheel Axle		2
84	BB-6205ZZ	Ball Bearing	6205ZZ	4
85	JHS1100-85	Wheel	180 x 25 x 50	2
85A	JHS1100-85A	Hydraulic Pump Assembly		1
	PT2748J-JET	JET Logo Label		2
	JHS1100-ID	ID & Warning Label		1
	JWS-FW	Fork Warning Label		2
	JWS-LCW	Load Center Warning Label		1

JHS-2200 Mast Assembly

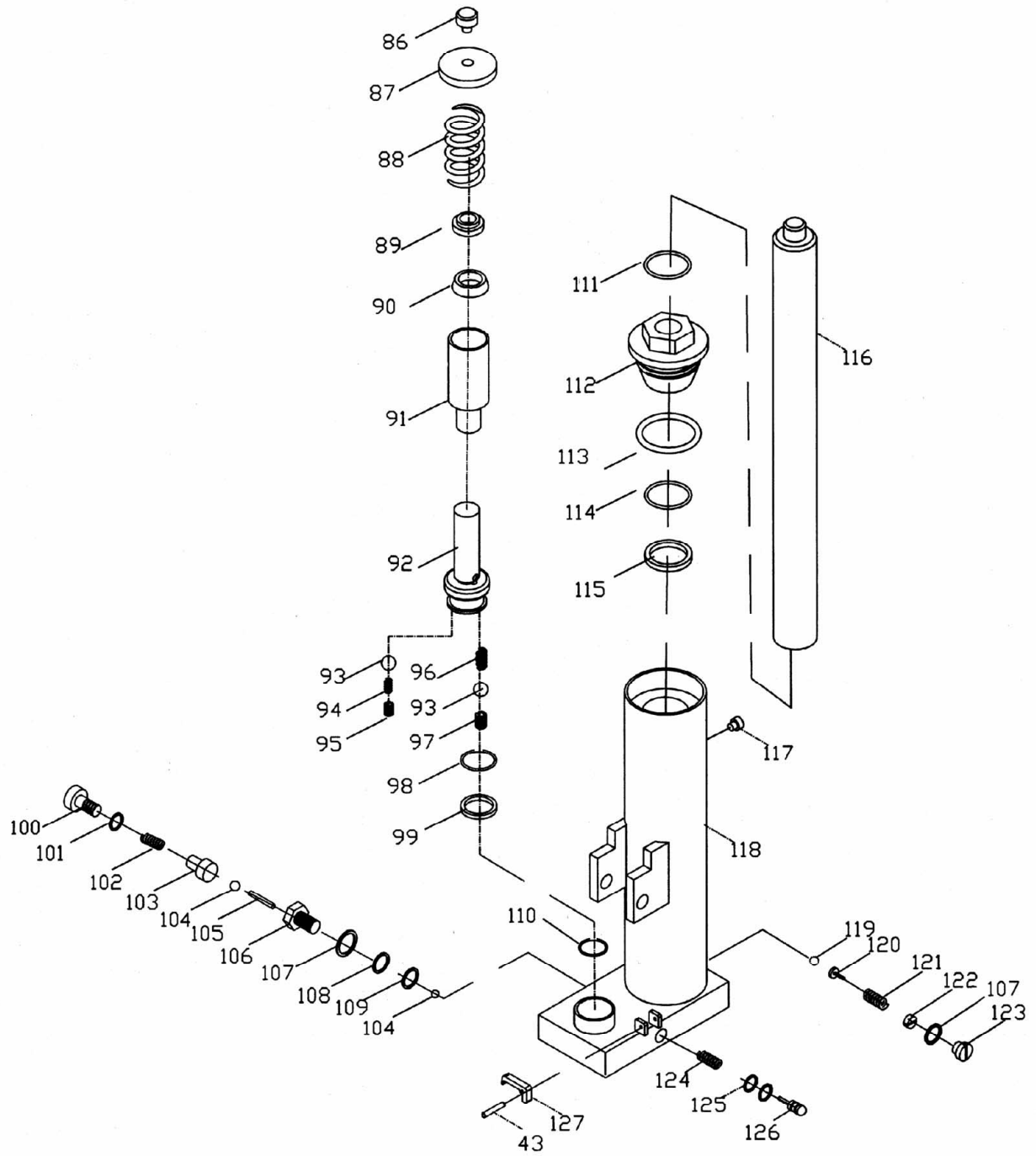


Parts List: JHS-2200 Mast Assembly

Index No.	Part No.	Description	Size	Qty
1	JHS2200-1	Fork		2
2	140523	Optional Steel Platform	28-1/4" x 41-1/2"	1
3	JHS1100-2	Adjusting Screw		2
4	JHS2200-4	Mounting Plate		1
5	JHS1100-4	Dog Point Socket Set Screw	M6 x 25	1
6	JHS2200-6	Fork Shaft		1
7	JHS1100-6	Guide Roller		4
8	JHS1100-7	Bushing	10 x 8 x 8	4
9	JHS1100-8	Guide Roller Axle		4
10	BB-6206ZZ	Ball Bearing	6206ZZ	4
11	JHS2200-11	Rolling Axle Cover		4
12	JHS1100-13A	Rubber Grip Handle		2
13	TS-1551041	Lock Washer	M6	16
14	TS-1503021	Socket Head Cap Screw	M6 x 10	16
15	TS-1551061	Lock Washer	M8	4
16	TS-1515011	Socket Head Cap Screw	M8 x 16	2
17	JHS2200-17	Bar		1
18	JHS2200-18	Mast		1
19	JHS1100-17	Snap Ring	Ø 20	8
20	JHS2200-20	Front Wheel Axle		2
21	JHS1100-18	Dust Cap		4
22	BB-6204ZZ	Ball Bearing	6204ZZ	8
23	JHS1100-20	Front Wheel		2
24A	JHS2200-24A	Left Outrigger Leg		1
24B	JHS2200-24B	Right Outrigger Leg		1
25	TS-154010	Hex Nut	M16	4
26	TS-155110	Lock Washer	M16	4
27	JHS2200-27	Hex Head Bolt	M16 x 150	4
28	TS-1550031	Flat Washer	M5	6
29	TS-1551031	Lock Washer	M5	6
30	TS-1533032	Phillips Pan Head Machine Screw	M5 x 10	6
31	JHS2200-31	Steel Fence		1
32	JHS1100-36	Link Pin		2
33	JHS1100-37	Split Pin	Ø 2 x 16	4
34	TS-2310181	Hex Nut	M18	4
35	JHS1100-40	Split Pin	Ø 4 x 30	2
36	JHS1100-41	Link Pin		2
37	JHS1100-35	Chain	12A-1 x 58	2
38	JHS1100-59	Chain Wheel		2
39	JHS1100-11	Snap Ring	Ø 47	2
40	JHS1100-60	Chain Wheel Bracket		1
41	JHS1100-61	Spring Pin	Ø 8 x 50	1
42	TS-1503051	Socket Head Cap Screw	M6 x 20	1
43	TS-1490061	Hex Cap Screw	M8 x 35	2
44	TS-1540061	Hex Nut	M8	2
45	JHS1100-85A	Hydraulic Pump Assembly		1
46	JHS1100-42	Foot Pedal		1
47	JHS1100-43	Spring Pin	Ø 8 x 30	2
48	JHS1100-45	Roller Pin		1
49	JHS1100-46	Bushing	17 x 15 x 15	1
50	JHS1100-47	Roller		1
51	JHS1100-51	Roller Axle		1
52	JHS1100-49	Bushing	18 x 16 x 8	6
53	JHS1100-50	Foot Lever		1
54	JHS1100-48	Snap Ring	Ø 12	3
55	JHS1100-52	Spring Pin	Ø 4 x 22	2

56	JHS1100-53	Roller		1
57	JHS1100-54	Lever		1
58	JHS1100-55	Spring Pin	∅ 6 x 32	1
59	JHS1100-70	Release Rod		1
60	JHS1100-70A	Chain	05B-1 x 15	1
61	JHS2200-61	Anchor Bolt		1
62	JHS1100-71	V-Nut	M6	1
63	JHS1100-56	Handle		1
64	JHS1100-57	Blocking Spring		1
65	JHS1100-58	Spring Pin	∅ 4 x 30	2
66	JHS1100-44	Spring Pin	∅ 3 x 30	2
67A	JHS1100-64A	Large Handle Pin		1
67B	JHS1100-64B	Small Handle Pin		1
68	JHS1100-38	Link Pin		2
69	BB-7205AC	Ball Bearing	7205AC	2
70	JHS1100-10	Snap Ring	∅ 25	2
71	JHS1100-72	Wheel Cover		2
72	JHS1100-75	Foot Brake		2
73	JHS1100-76	Stop Lug		2
74	TS-1550061	Flat Washer	M8	2
75	JHS1100-78	V-Nut	M8	2
76	JHS1100-79	Hex Head Bolt	M10 x 25	4
77	TS-1551071	Lock Washer	M10	4
78	TS-1550071	Flat Washer	M10	4
79	JHS1100-82	Dust Cap		4
80	JHS1100-83	Wheel Axle		2
81	BB-6205ZZ	Ball Bearing	6205ZZ	4
82	JHS1100-85	Wheel	180 x 20 x 60	2
83	JHS1100-44	Spring Pin	∅ 3 x 30	2
84	JHS1100-63	Shaft		1
85	JHS1100-69	Spring		1
86	JHS1100-65	Roller		1
87	JHS1100-66	Shaft		1
	PT2748J-JET	JET Logo Label		2
	JHS2200-ID	ID/Warning Label		1
	JWS-FW	Fork Warning Label		2
	JWS-LCW	Load Center Warning Label		1

JHS-1100 and JHS-2200 Pump Assembly



Parts List: JHS-1100 and JHS-2200 Pump Assembly

Index No.	Part No.	Description	Size	Qty
	JHS1100-85A	Hydraulic Pump Assembly (includes the following)		
43	JHS1100-43	Spring Pin	∅ 8 x 30	1
86	JHS1100-86	Bolt		1
87	JHS1100-87	Spring Cap		1
88	JHS1100-88	Spring		1
89	JHS1100-89	Dust Seal *	20 x 28 x 6	1
90	JHS1100-90	U-Ring *	20 x 28 x 5	1
91	JHS1100-91	Pump		1
92	JHS1100-92	Plunger Piston		1
93	SB-4MM	Steel Ball	∅ 4	2
94	JHS1100-94	Spring		1
95	JHS1100-95	Adjusting Screw		1
96	JHS1100-96	Spring		1
97	JHS1100-97	Adjusting Screw		1
98	JHS1100-98	Back-Up Ring *		1
99	JHS1100-99	U-Ring *	18 x 25 x 5	1
100	JHS1100-100	Release Plug		1
101	JHS1100-101	Washer		1
102	JHS1100-102	Spring		1
103	JHS1100-103	Spring Base		1
104	SB-6MM	Steel Ball	∅ 6	2
105	JHS1100-105	Pin	3 x 13.8	1
106	JHS1100-106	Release Plug		1
107	JHS1100-107	O-Ring *	13.2 x 2.65	2
108	JHS1100-108	Back-Up Ring *		1
109	JHS1100-109	Washer		1
110	JHS1100-110	Washer		1
111	JHS1100-111	Dust Seal	32 x 40 x 5.5	1
112	JHS1100-112	Cover		1
113	JHS1100-113	O-Ring *	63 x 3.55	1
114	JHS1100-114	O-Ring *	31.5 x 3.55	1
115	JHS1100-115	U-Ring *	32 x 40 x 5.5	1
116	JHS1100-116	Ram Piston		1
117	JHS1100-117	Oil Plug		1
118	JHS1100-118	Pump Body		1
119	SB-6.5MM	Steel Ball	∅ 6.5	1
120	JHS1100-120	Spring Base		1
121	JHS1100-121	Spring		1
122	JHS1100-122	Adjusting Screw		1
123	JHS1100-123	Relief Plug		1
124	JHS1100-124	Spring		1
125	JHS1100-125	O-Ring *	4.87 x 1.6	2
126	JHS1100-126	Nozzle		1
127	JHS1100-127	Cam		1
	JHS1100-RK	Pump Repair Kit (includes parts marked with *)		1



WMH Tool Group
2420 Vantage Drive
Elgin, Illinois 60124
Phone: 800-274-6848
www.wmhtoolgroup.com